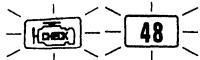
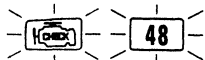
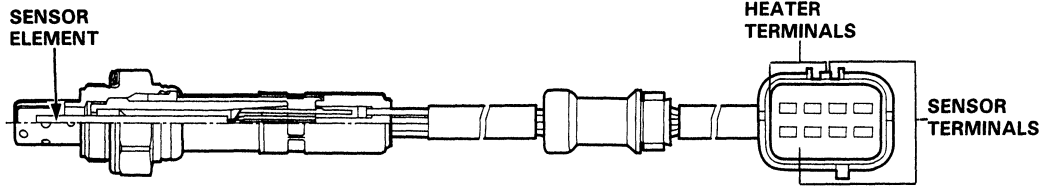


PGM-FI Control System

Troubleshooting Flowchart — LAF Sensor (D15Z1 engine)



Self-diagnosis Check Engine light indicates code 48: A problem in the Linear Air Fuel ratio (LAF) Sensor circuit. The LAF sensor operates over a wide air/fuel range.



— Engine is running.
— Check Engine light has been reported on. With service check connector jumped (page 11-22), CODE 48 is indicated.

Do the ECU Reset Procedures (page 11-23).

Start the engine.

Is Check Engine light on and does it indicate CODE 48?

NO
Road test with the transmission in 3rd gear. Hold the engine speed 1500 rpm.

Is Check Engine light on and does it indicate CODE 48?

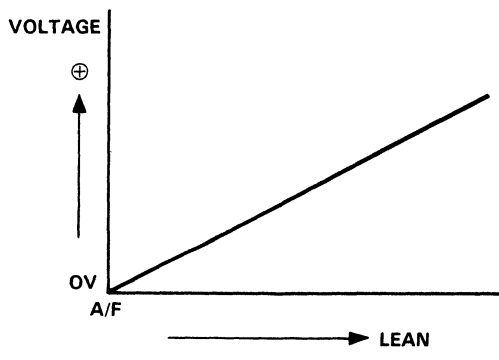
YES
Turn the ignition switch OFF.

Connect the test harness between the ECU and connector (page 11-25).

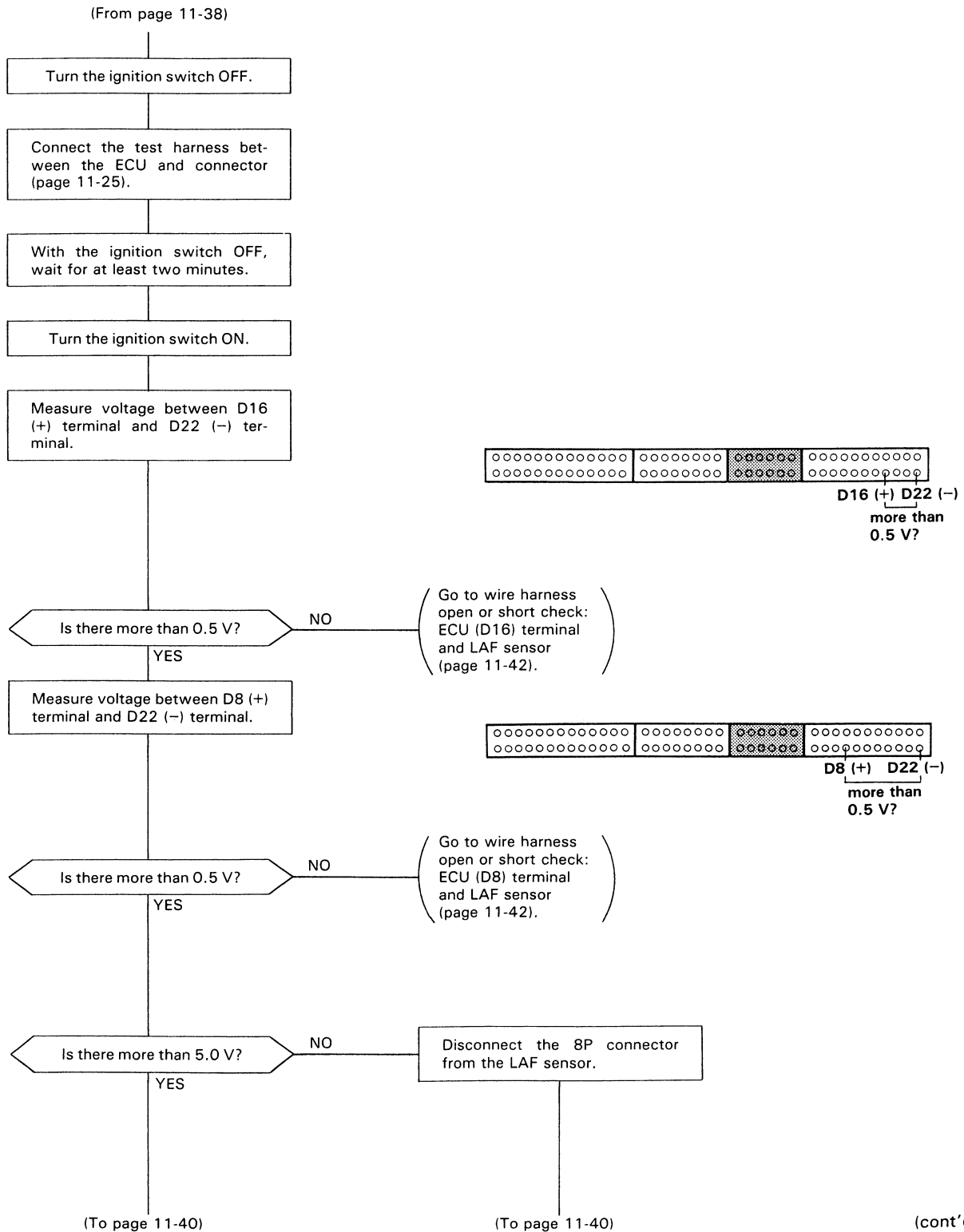
Go to wire harness open check: ECU (D14) terminal and LAF sensor (page 11-42).

Intermittent failure, system is OK at this time (test drive may be necessary). Check for poor connections or loose wires at C211 (located at right Shock Tower), C111 (LAF sensor) and ECU.

NOTE: Use DIGITAL MULTIMETER

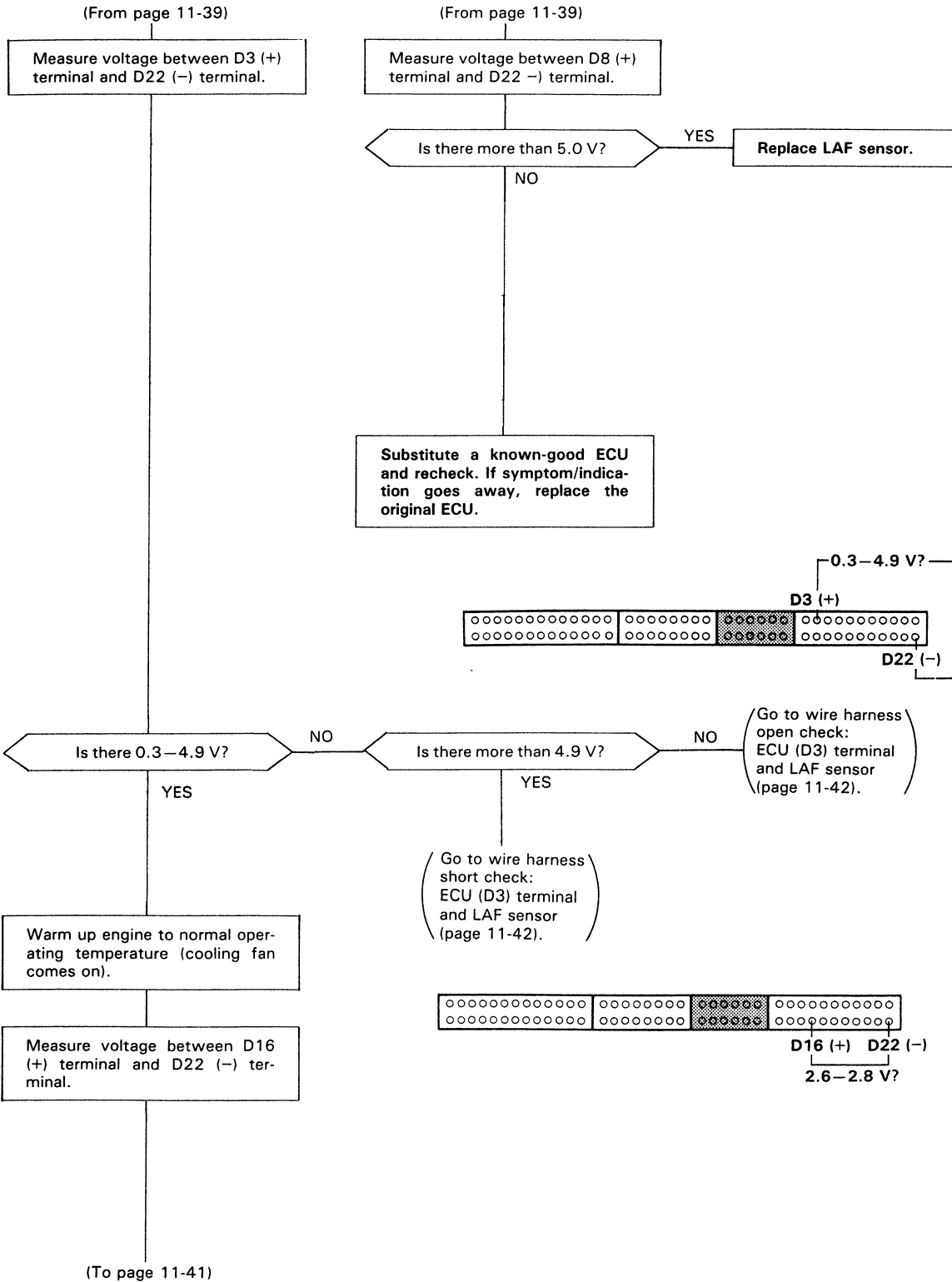


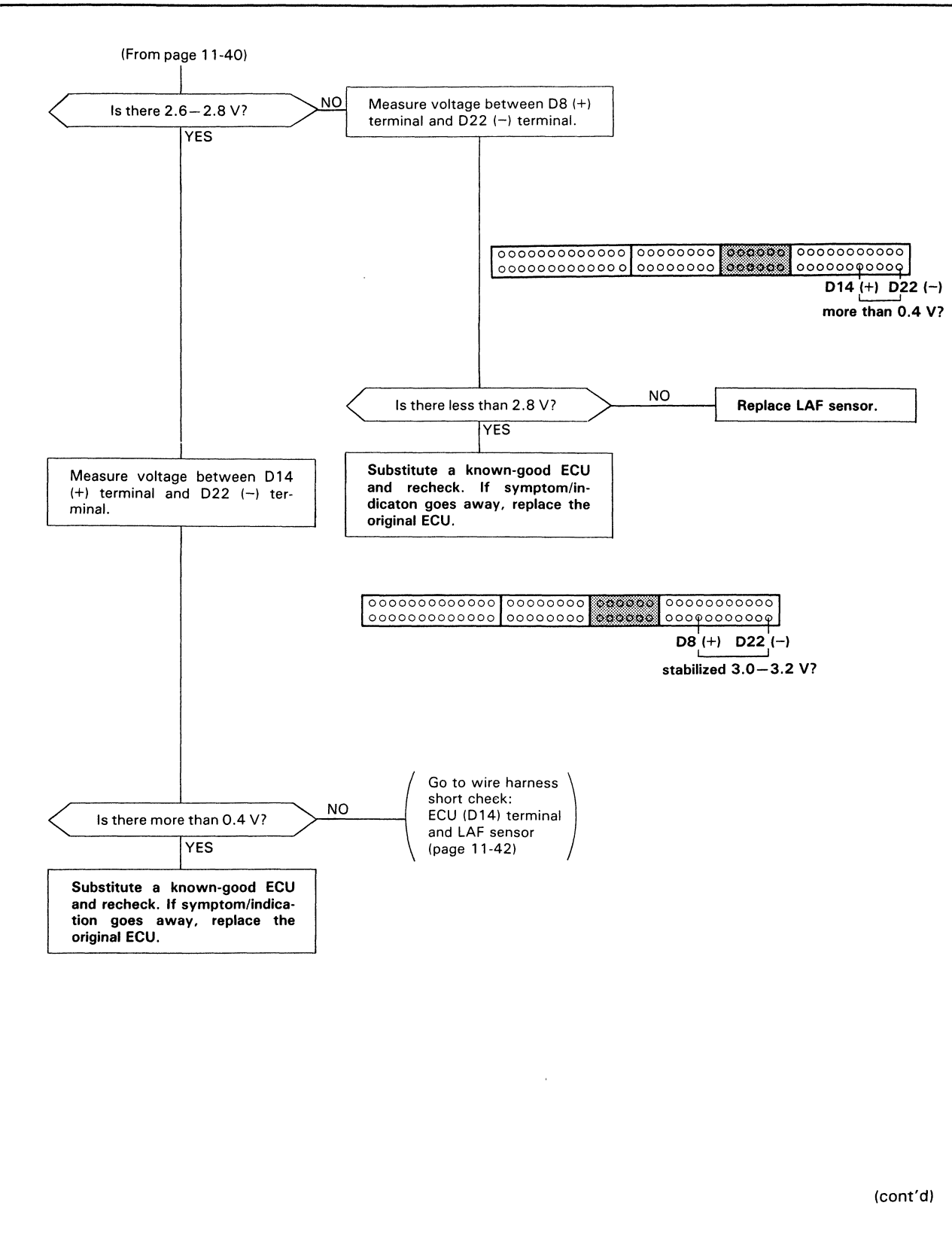
(To page 11-39)



PGM-FI Control System

Troubleshooting Flowchart — LAF Sensor (D15Z1 engine) (cont'd)





(cont'd)

PGM-FI Control System

Troubleshooting Flowchart—LAF Sensor (D15Z1 engine) (cont'd)

Wire harness short check:

Turn the ignition switch OFF.

Disconnect "D" connector from the ECU only, not the main wire harness (page 11-25).

Check for continuity to body ground on indicated terminals.
* see table

Does continuity exist?

YES

Disconnect the 8p connector from the LAF sensor.

Check for continuity to body ground on indicated terminals.
* see table

Does continuity exist?

YES

Repair short in the indicated sensor wires.
* see table

NO

Replace LAF sensor.

Wire harness open check:

Turn the ignition switch OFF.

Disconnect "D" connector from the ECU only, not the main wire harness (page 11-25).

Disconnect the 8p connector from the LAF sensor.

Check for continuity between indicated terminals and wire harness.
* see table

Does continuity exist?

NO

Repair open in the indicated sensor wires.
* see table

YES

Inspect for poor terminal to terminal contact at LAF sensor connector and ECU.
If terminal contact is OK, replace LAF sensor.

* Table:

CODE	ECU TERMINAL	WIRE COLOR	
		MAIN WIRE HARNESS	ENGINE WIRE HARNESS
41 (page, 11-48)	A6 (HTCNTL)	ORN/BLK	YEL/BLK
	A23 (PG1)	BLK	←
48	D22 (SG2)	GRN/WHT	←
	D3 (LABEL)	BLU/YEL	WHT
	D8 (VS +)	WHT/BLU	←
	D14 (IP +)	ORN/BLU	←
	D16 (IP -, VS -)	BLU/GRN	ORN

WIRE COLOR (ENGINE WIRE HARNESS SIDE):

